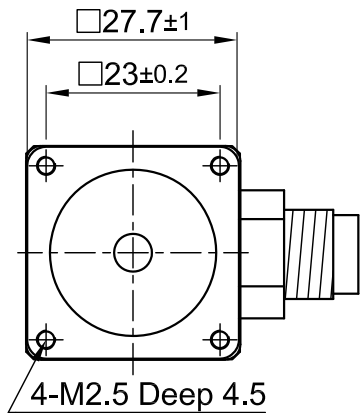
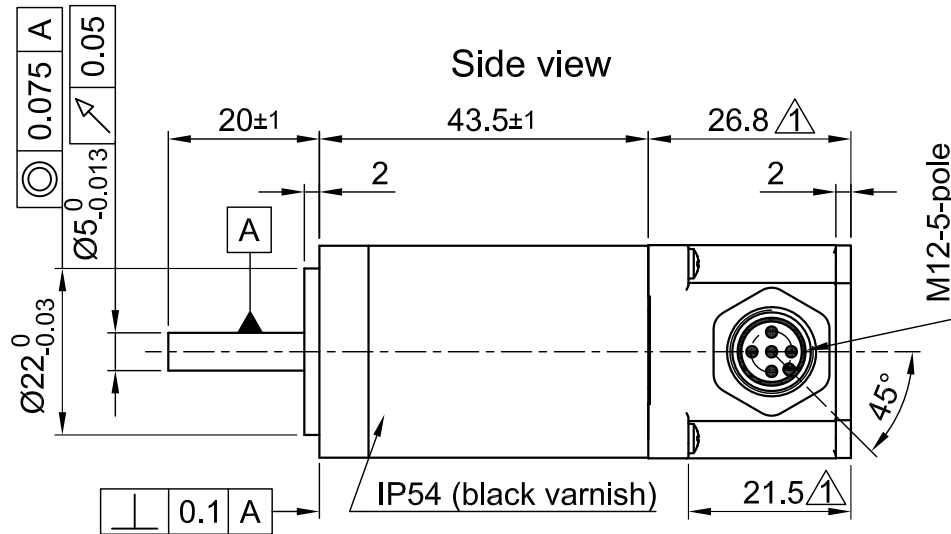


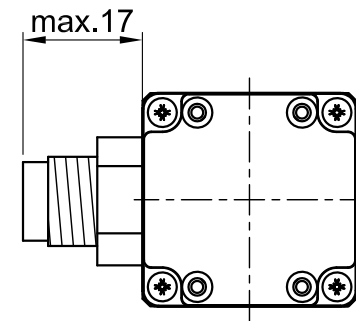
Front view and mounting



Side view

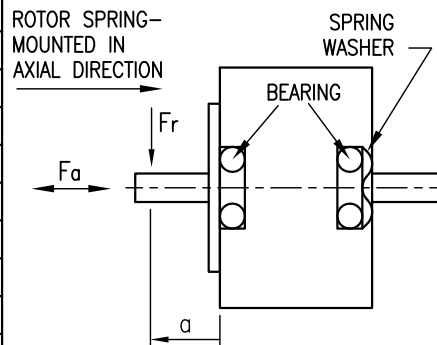


Rear view



SPECIFICATION	CONNECTION	BIPOLAR SERIAL
VOLTAGE (VDC)		6.16
AMPS/PHASE		0.67
RESISTANCE/PHASE (Ohms)@25°C		9.2±15%
INDUCTANCE/PHASE (mH) @1KHz		5.6±20%
HOLDING TORQUE (Nm) [lb-in]		0.127 [1.124]
DETENT TORQUE (Nm) [lb-in]		4.5x10 ⁻³ [0.04]
STEP ANGLE (°)		1.8
STEP ACCURACY (NON-ACCUM)		±5%
ROTOR INERTIA (Kg-m ²) [lb-in ²]		1.8x10 ⁻⁶ [6.148x10 ⁻³]
WEIGHT (Kg) [lb]		0.22 [0.485]

PERMISSIBLE RADIAL+AXIAL FORCE



CABLE MOTOR: \triangle
 ZK-M12-5-2m(5m)
 STRAIGHT OR 90°
 ANGELED

M12-5 pole Motor	
NO.	ASSIGNMENT
1	A\
2	A
3	B
4	B\
5	HOUSING



FULL STEP 2 PHASE-Ex.,
 WHEN FACING MOUNTING END (X)

STEP	A	B	A\	B\	CCW
1	+	+	-	-	
2	-	+	+	-	
3	-	-	+	+	
4	+	-	-	+	

TEMPERATURE RISE: MAX.80°C (MOTOR STANDSTILL; FOR 2 PHASE ENERGIZED)	AXIAL-FORCE Fa (N)	Fa=7			
AMBIENT TEMPERATURE -10~ 50°C [14°F ~ 122°F]	DISTANCE a (mm)	5	10	15	20
INSULATION RESISTANCE 100 MOhm (UNDER NORMAL TEMPERATURE AND HUMIDITY)	RADIAL-FORCE Fr (N)	58	36	26	20
INSULATION CLASS B 130° [266°F]		AXIAL		RADIAL	
DIELECTRIC STRENGTH 500VAC FOR 1 MIN. (BETWEEN THE MOTOR COILS AND THE MOTOR CASE)	SHAFT PLAY (mm)	0.075		0.025	
AMBIENT HUMIDITY MAX. 85% (NO CONDENSATION)	AT LOAD MAX: (N)	10		5.0	

3	PIN-ASSIGNMENT	17.04.09	J.W.
5	WIRE COLOUR DELETE	29.09.09	J.W.
4	NAME OF CABLE+CONNECTOR	07.07.09	J.W.
REV	DESCRIPTION	DATE	APVD



AS2818L0604 \triangle

SCALE FREE	APVD	S.Ha.	11.07.07
X ±0.5	CHKD		
1PL ±0.2	DRN	J.W.	15.01.07
2PL ±0.1	SIGNATURE		DATE
ANGLE ±30°			

Linear Actuator

DWG.NO

AS2818L0604 \triangle