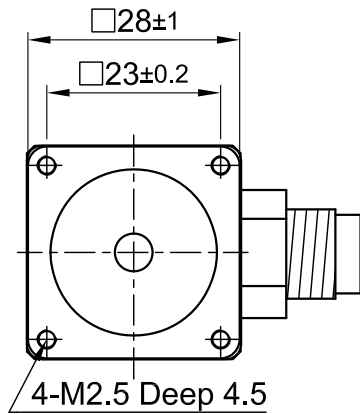
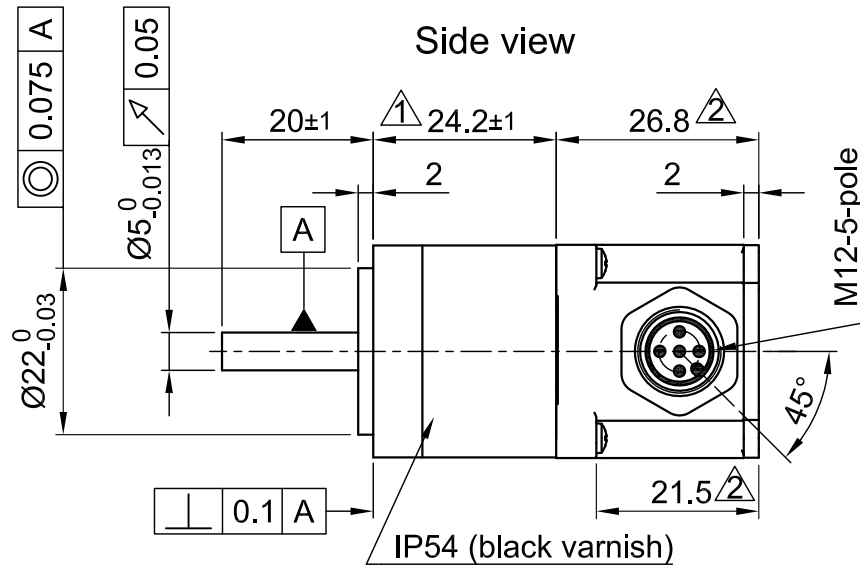


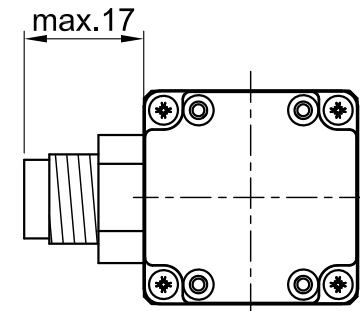
Front view and mounting



Side view

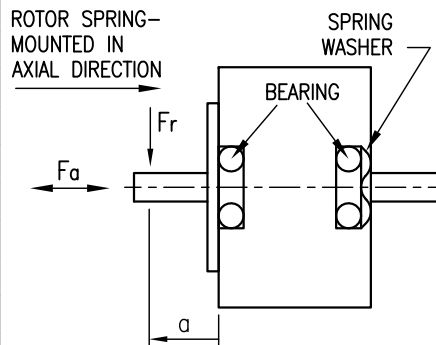


Rear view



SPECIFICATION	CONNECTION	BIPOLAR SERIAL
VOLTAGE (VDC)		3.75
AMPS/PHASE		0.67
RESISTANCE/PHASE (Ohms)@25°C		5.6±15%
INDUCTANCE/PHASE (mH) @1KHz		4.0±20%
HOLDING TORQUE (Nm) [lb-in]		0.071 [0.626]
DETENT TORQUE (Nm) [lb-in]		2.5x10 ⁻³ [0.0222]
STEP ANGLE (°)		1.8
STEP ACCURACY (NON-ACCUM)		±5%
ROTOR INERTIA (Kg-m ²) [lb-in ²]		9x10 ⁻⁷ [3.074x10 ⁻³]
WEIGHT (Kg) [lb]		0.13 [0.287]

PERMISSIBLE RADIAL+AXIAL FORCE



CABLE MOTOR: \triangle
 ZK-M12-5-2m(5m)
 STRAIGHT OR 90°
 ANGELED

M12-5 pole Motor	
NO.	ASSIGNMENT
1	A\
2	A
3	B
4	B\
5	HOUSING



FULL STEP 2 PHASE-Ex.,
 WHEN FACING MOUNTING END (X)

STEP	A	B	A\	B\	CW	CCW
1	+	+	-	-	↓	↑
2	-	+	+	-	↓	↑
3	-	-	+	+	↓	↑
4	+	-	-	+	↓	↑

6	WIRE COLOUR DELETE	29.09.09	J.W.
5	NAMEN OF CABLE+CONNECTOR	07.07.09	J.W.
4	PIN-ASSIGNMENT	17.04.09	J.W.
REV	DESCRIPTION	DATE	APVD



AS2818S0604 \triangle

SCALE	FREE	APVD	S.Ha.	11.07.07
X	±0.5	CHKD		
1PL	±0.2	DRN	J.W.	15.01.07
2PL	±0.1	SIGNATURE		
ANGLE	±30'	DATE		

Linear Actuator

DWG.NO

AS2818S0604 \triangle