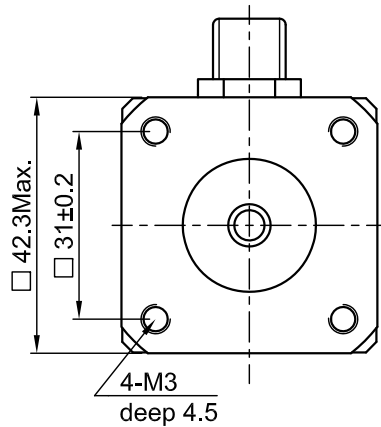
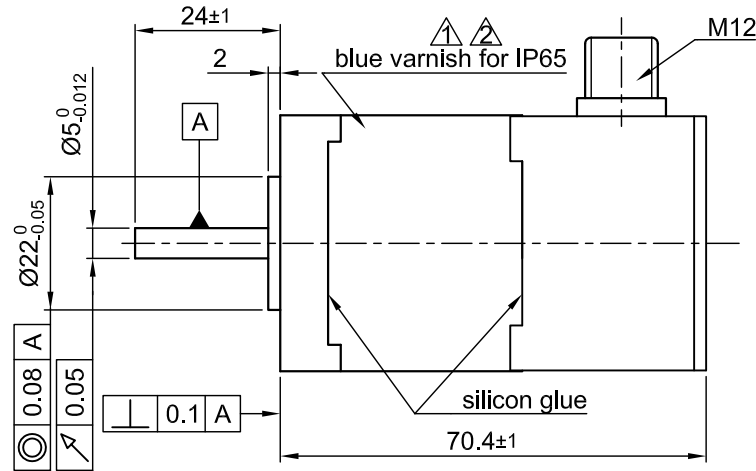


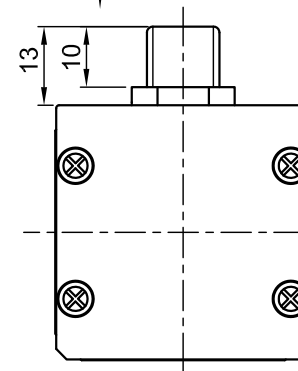
Front view and mounting



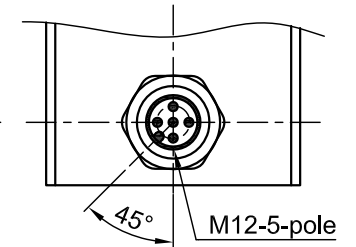
Side view



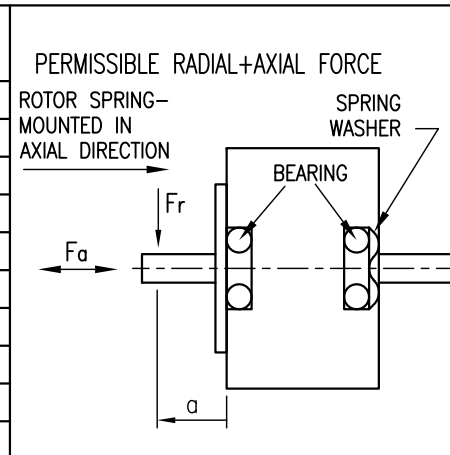
Rear view



Y view



CONNECTION	BIPOLAR SERIAL
SPECIFICATION	
VOLTAGE (VDC)	3.15
AMPS/PHASE	1.8
RESISTANCE/PHASE (Ohms)@25°C	1.75±10%
INDUCTANCE/PHASE (mH) @1KHz	3.3±20%
HOLDING TORQUE (Nm) [lb-in]	0.5 [4.425]
DETENT TORQUE (Nm) [lb-in]	0.022 [0.1946]
STEP ANGLE (°) ± ACCURACY	1.8±5% (NON-ACCUM)
BACK-EMF (V) (300 U/min)	6.9
ROTOR INERTIA (Kg-m ²) [lb-in ²]	8.2x10 ⁻⁶ [0.028]
WEIGHT (Kg) [lb]	0.34 [0.75]
TEMPERATURE RISE: MAX.80°C (MOTOR STANDSTILL; FOR 2 PHASE ENERGIZED)	
AMBIENT TEMPERATURE -10~ 50°C [14°F ~ 122°F]	
INSULATION RESISTANCE 100 MOhm (UNDER NORMAL TEMPERATURE AND HUMIDITY)	
INSULATION CLASS B 130° [266°F]	
DIELECTRIC STRENGTH 500VAC FOR 1 MIN. (BETWEEN THE MOTOR COILS AND THE MOTOR CASE)	
AMBIENT HUMIDITY MAX. 85% (NO CONDENSATION)	



	AXIAL-FORCE Fa (N)				
	Fa=15				
	DISTANCE a (mm)	5	10	15	20
	RADIAL-FORCE Fr (N)	130	90	70	52
		AXIAL	RADIAL		
	SHAFT PLAY (mm)	0.08	0.02		
	AT LOAD MAX: (N)	4.5	4.5		

CABLE MOTOR: Δ
 ZK-M12-5-2m(5m)
 STRAIGHT OR 90°
 ANGELED

M12-5 pole Motor	
NO.	ASSIGNMENT
1	A\
2	A
3	B
4	B\
5	HOUSING

FULL STEP 2 PHASE-Ex.,
 WHEN FACING MOUNTING END (X)

STEP	A	B	A\	B\	CCW	CW
1	+	+	-	-	↓	↑
2	-	+	+	-	↓	↑
3	-	-	+	+	↓	↑
4	+	-	-	+	↓	↑

3	ADD. Y VIEW + CABLE TYPE	29.04.09	J.W.
5	WIRE COLOUR DELETE	29.09.09	J.W.
4	CONNECTOR NAME	06.07.09	J.W.
REV	DESCRIPTION	DATE	APVD



AS4118L1804

SCALE FREE	APVD	S.H.	12.08.08
X ±0.5	CHKD		
1PL ±0.2	DRN	J.W.	12.08.08
2PL ±0.1	SIGNATURE	DATE	
ANGLE ±30'			

STEPPING MOTOR

DWG.NO

AS4118L1804