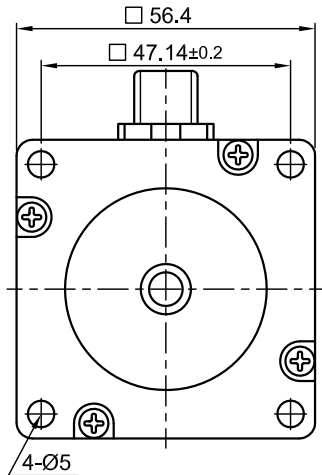
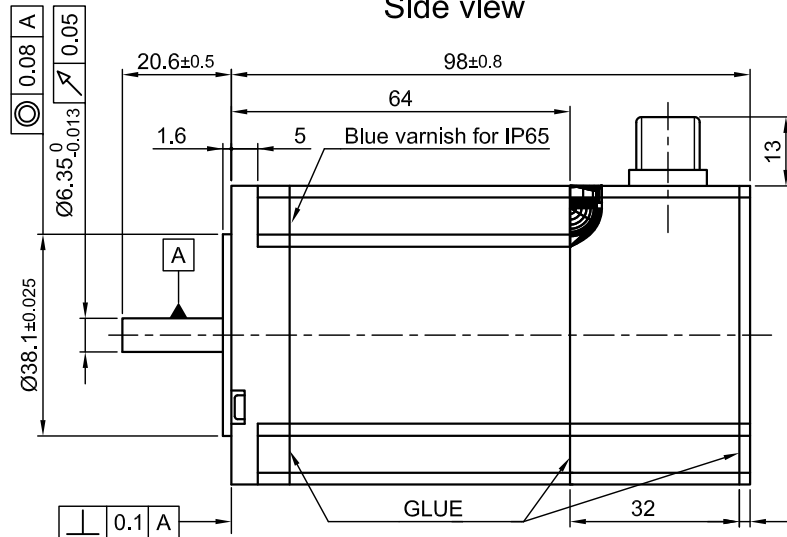


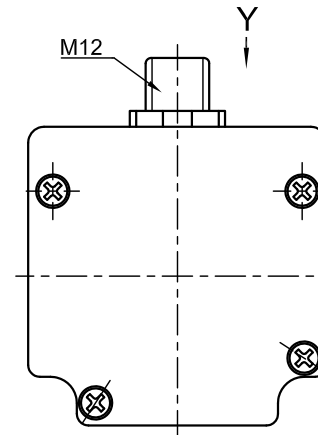
Front view and mounting



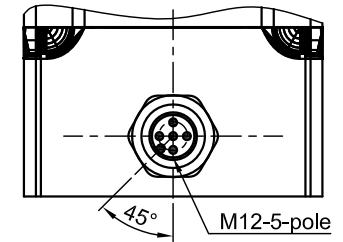
Side view



Rear view



Y view



SPECIFICATION	CONNECTION	BIPOLAR PARALLEL	PERMISSIBLE RADIAL+AXIAL FORCE	
VOLTAGE (VDC)		2.1		
AMPS/PHASE		4.2		
RESISTANCE/PHASE (Ohms)@25°C		0.5 ± 10%		
INDUCTANCE/PHASE (mH) @1KHz		1.9 ± 20%		
HOLDING TORQUE (Nm) [lb-in]		1.98 [17.52]		
DETENT TORQUE (Nm) [lb-in]		0.068 [0.602]		
STEP ANGLE (°) ± ACCURACY		1.8 ± 5% (NON-ACCUM)		
BACK-EMF (V) (300 U/min)		20		
ROTOR INERTIA (Kg-m²) [lb-in²]		4.8 × 10 <sup>-5</sup> [0.164]		
WEIGHT (Kg) [lb]		1.14 [2.508]		
TEMPERATURE RISE: MAX.80°C (MOTOR STANDSTILL; FOR 2 PHASE ENERGIZED)				AXIAL-FORCE Fa (N)
AMBIENT TEMPERATURE -10°~ 50°C [14°F ~ 122°F]				Fa=15
INSULATION RESISTANCE 100 MOhm (UNDER NORMAL TEMPERATURE AND HUMIDITY)			DISTANCE a (mm)	
INSULATION CLASS B 130° [266°F]			5 10 15 20	
DIELECTRIC STRENGTH 500VAC FOR 1 MIN. (BETWEEN THE MOTOR COILS AND THE MOTOR CASE)			RADIAL-FORCE Fr (N)	
AMBIENT HUMIDITY MAX. 85% (NO CONDENSATION)			130 90 70 52	
			AXIAL	
			RADIAL	
			SHAFT PLAY (mm)	
			0.08 0.02	
			AT LOAD MAX: (N)	
			4.5 4.5	

CABLE MOTOR:  
ZK-M12-5-2m(5m)  
STRAIGHT OR 90°  
ANGELED

M12-5 pole Motor	
NO.	ASSIGNMENT
1	A\
2	A
3	B
4	B\
5	HOUSING

FULL STEP 2 PHASE-Ex.,  
WHEN FACING MOUNTING END (X)

STEP	A	B	A\	B\	CCW
1	+	+	-	-	
2	-	+	+	-	
3	-	-	+	+	
4	+	-	-	+	

3	WIRE COLOUR DELETE	29.09.09	J.W.		SCALE FREE	APVD	S.R.	12.12.08	<b>STEPPING MOTOR</b>
2	CONNECTOR NAME	06.07.09	J.W.		X ±0.5	CHKD			
1	INDUCTANCE	06.05.09	J.W.	1PL ±0.2	DRN	J.W.	12.12.08	DWG.NO	AS5918L4204
REV	DESCRIPTION	DATE	APVD	2PL ±0.1	SIGNATURE		DATE		
				ANGLE ±30'					AS5918L4204