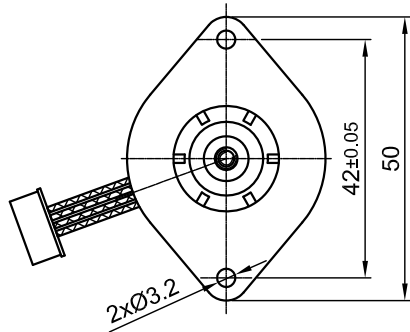
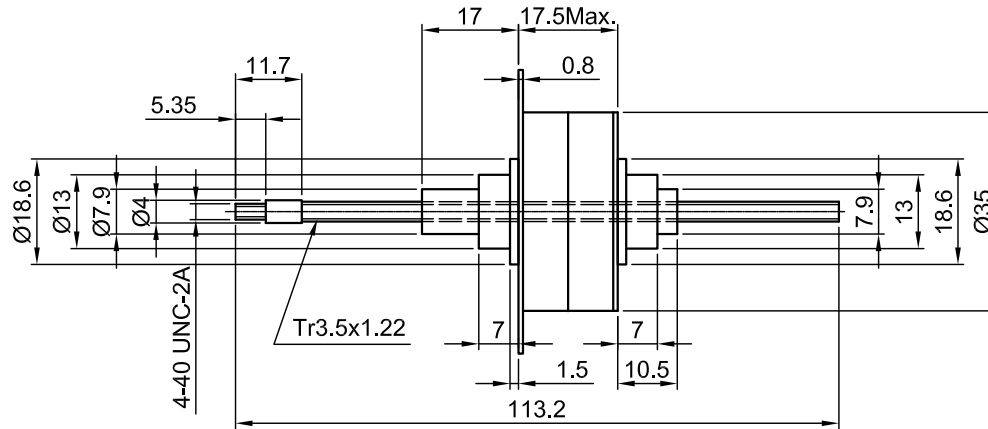


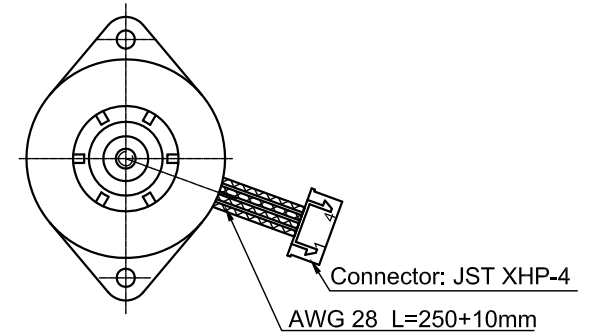
Front view and mounting



Side view

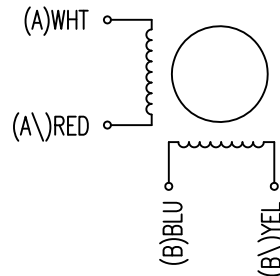


Rear view



SPECIFICATION	CONNECTION
VOLTAGE (VDC)	5.0
AMPS/PHASE	0.46
RESISTANCE/PHASE (Ohms)@25°C	11±10%
STEP ANGLE (°)	7.5
RESOLUTION (mm/STEP)	0.0254
THRUST (N) [lbf]	55 [12.36]
STROKE (mm)	75
WEIGHT (Kg) [lb]	0.086 [0.189]
PITCH (mm)	1.22
TEMPERATURE RISE: MAX.75°C (MOTOR STANDSTILL; FOR 2 PHASE ENERGIZED)	
AMBIENT TEMPERATURE -20°~ 50°C [-4°F ~ 122°F]	
INSULATION RESISTANCE 100 MOhm (UNDER NORMAL TEMPERATURE AND HUMIDITY)	
INSULATION CLASS E 120° [248°F]	
DIELECTRIC STRENGTH 600VAC FOR 1 MIN. (BETWEEN THE MOTOR COILS AND THE MOTOR CASE)	
AMBIENT HUMIDITY MAX. 85% (NO CONDENSATION)	

WIRING DIAGRAM



FULL STEP 2 PHASE-Ex.,
WHEN FACING MOUNTING END (X)

STEP	A	B	A\	B\	CCW
1	+	+	-	-	
2	-	+	+	-	
3	-	-	+	+	
4	+	-	-	+	

TYPE OF CONNECTION (EXTERN)	MOTOR			
	BIPOLAR	CONNECTOR PIN NO.	LEADS	WINDING
A —	1	WHT	A	
A\ —	2	RED	A\	
B —	3	BLU	B	
B\ —	4	YEL	B\	

REV	DESCRIPTION	DATE	APVD	NANOTEC:	SCALE FREE	APVD	S.Ha.	04.07.08	STEPPING MOTOR
				LP3575S0504-TR3.5X1.22	X ±0.5 1PL ±0.2 2PL ±0.1 ANGLE ±30'	CHKD			
						DRN	J.W.	14.01.08	DWG.NO
						SIGNATURE		DATE	LP3575S0504-TR3.5X1.22