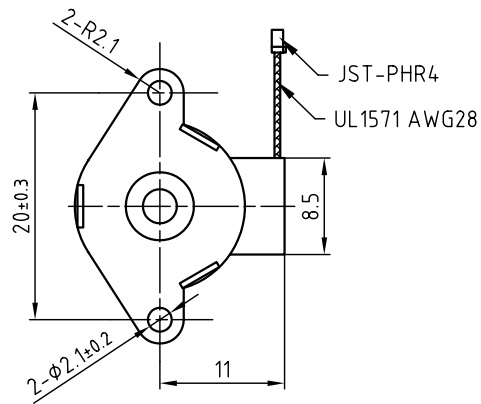
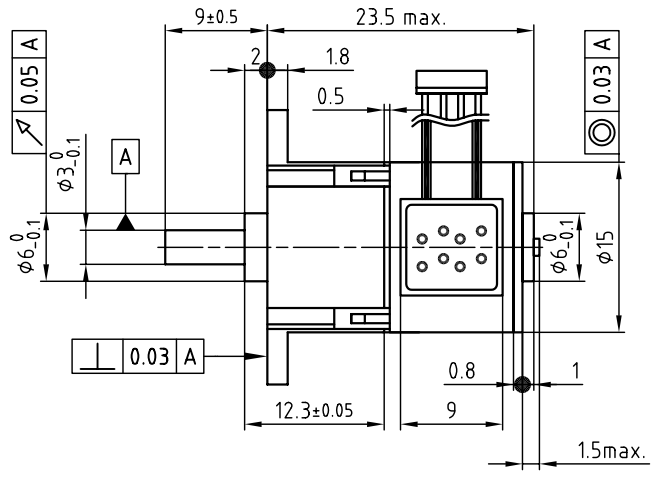


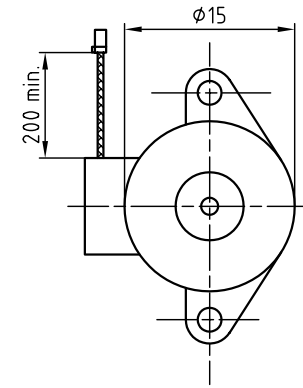
Front view and mounting



Side view

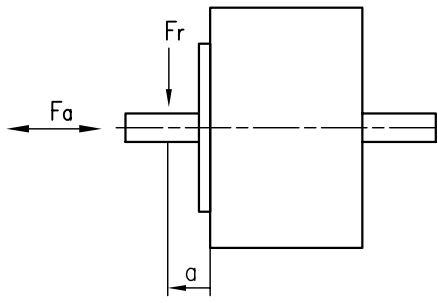


Rear view



SPECIFICATION	CONNECTION	BIPOLAR
VOLTAGE (VDC)		5
AMPS/PHASE		0.5
RESISTANCE/PHASE (Ohms)@25°C		10±7%
INDUCTANCE/PHASE (mH) @1KHz		2.3±20%
HOLDING TORQUE (Nm) [lb-in]		0.2 [1.76]
GEAR RATIO		1:102.5
STEP ANGLE (°)		18/102.5
STEP ACCURACY (NON-ACCUM)		±7%
ROTOR INERTIA (Kg-m ²) [lb-in ²]		1.0x10 ⁻⁷ [3.416X10 ⁻⁴]
WEIGHT (Kg) [lb]		0.012 [0.026]

PERMISSIBLE RADIAL+AXIAL FORCE

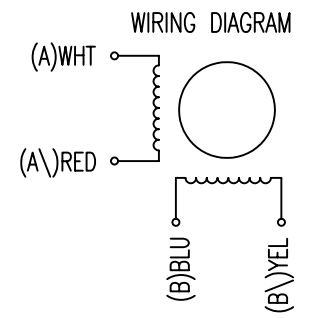


AXIAL-FORCE Fa (N)	Fr=2.0	AXIAL	RADIAL
DISTANCE a (mm)	Fa=1.0	0.08	0.06
RADIAL-FORCE Fr (N)	1/2 SCHAFTLENGTH	AT LOAD MAX: (N)	
		4.5	4.5

TYPE OF CONNECTION (EXTERN)	MOTOR			
	BIPOLAR	CONNECTOR PIN NO.	LEADS	WINDING
A —	1	WHT	A	
A\ —	2	RED	A\	
B —	3	BLU	B	
B\ —	4	YEL	B\	

FULL STEP 2 PHASE-Ex., WHEN FACING MOUNTING END (X)

STEP	A	B	A\	B\	CCW	CW
1	+	+	-	-	↓	↑
2	-	+	+	-	↓	↑
3	-	-	+	+	↓	↑
4	+	-	-	+	↓	↑



REV	DESCRIPTION	DATE	APVD	NANOTEC: SPG1518M0504-102	SCALE FREE	APVD	S.Ha.	14.01.08	STEPPING MOTOR
					X ±0.5	CHKD			
					1PL ±0.2	DRN	J.W.	11.01.08	DWG.NO
				2PL ±0.1	SIGNATURE		DATE	SPG1518M0504-102	
				ANGLE ±30'					