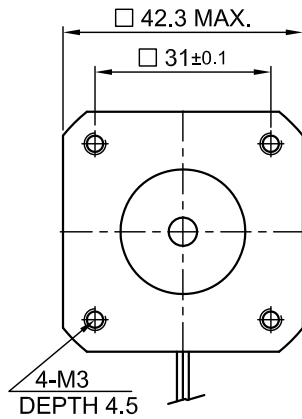
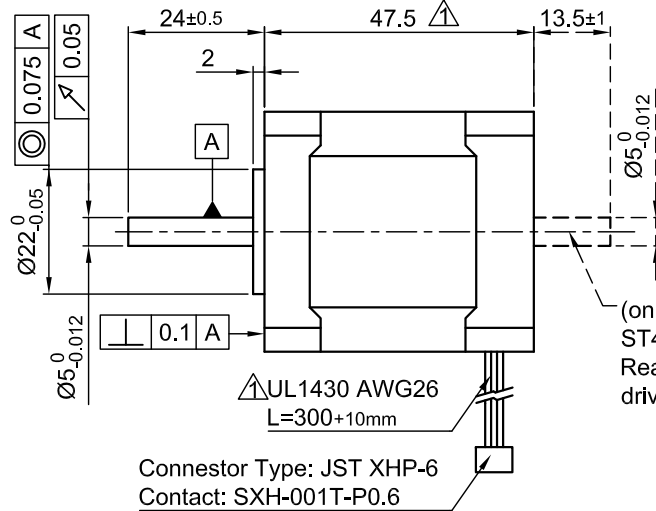


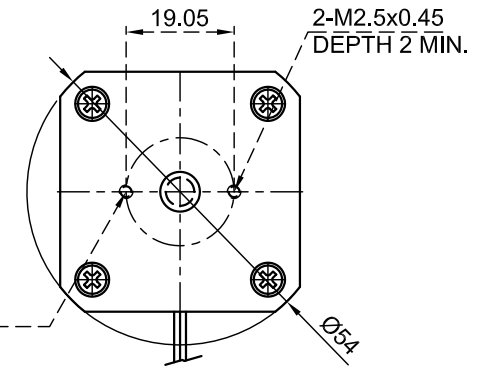
Front view and mounting



Side view

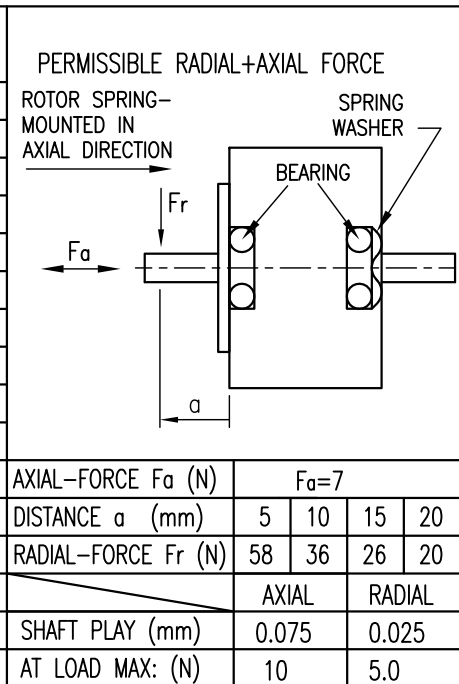


Rear view



(only for type ST4209L1206-B Ready for encoder + driver mount)

| SPECIFICATION | CONNECTION | |
|--|-------------------------------|-------------------|
| | UNIPOLAR OR BIPOLAR-1 WINDING | BIPOLAR SERIAL |
| VOLTAGE (VDC) | 3.96 | 5.61 |
| AMPS/PHASE | 1.2 | 0.85 |
| RESISTANCE/PHASE (Ohms)@25°C | 3.3±15% | 6.6±15% |
| INDUCTANCE/PHASE (mH) @1KHz | 4.8±20% Δ | 19.2±20% Δ |
| HOLDING TORQUE (Nm) [lb-in] | 0.31 [2.744] | 0.438 [3.876] |
| DETENT TORQUE (Nm) [lb-in] | 9.3x10 ⁻³ [0.0823] | |
| STEP ANGLE (°) | 0.9 | |
| STEP ACCURACY (NON-ACCUM) | ±5% | |
| ROTOR INERTIA (Kg-m ²) [lb-in ²] | 6.8x10 ⁻⁶ [0.0232] | |
| WEIGHT (Kg) [lb] | 0.35 [0.772] | |
| TEMPERATURE RISE: MAX.80°C (MOTOR STANDSTILL; FOR 2 PHASE ENERGIZED) | AXIAL-FORCE Fa (N) | |
| AMBIENT TEMPERATURE -10°~ 50°C [14°F ~ 122°F] | DISTANCE a (mm) | |
| INSULATION RESISTANCE 100 MOhm (UNDER NORMAL TEMPERATURE AND HUMIDITY) | RADIAL-FORCE Fr (N) | |
| INSULATION CLASS B 130° [266°F] | AXIAL | |
| DIELECTRIC STRENGTH 500VAC FOR 1 MIN. (BETWEEN THE MOTOR COILS AND THE MOTOR CASE) | RADIAL | |
| AMBIENT HUMIDITY MAX. 85% (NO CONDENSATION) | SHAFT PLAY (mm) | |
| | AT LOAD MAX: (N) | |



| TYPE OF CONNECTION (EXTERN) | MOTOR | | |
|-----------------------------|----------|---------|-------------------|
| | UNIPOLAR | BIPOLAR | CONNECTOR PIN NO. |
| A | A | A | 1 |
| COM | COM | COM | 5 |
| A\ | A\ | A\ | 3 |
| B | B | B | 2 |
| COM | COM | COM | 6 |
| B\ | B\ | B\ | 4 |

| LEADS | WINDING |
|-------|---------|
| BRN | A |
| BLK | COM |
| ORG | A\ |
| RED | B |
| WHT | COM |
| YEL | B\ |

for >speed ←---|
for <speed ←---|

FULL STEP 2 PHASE-Ex., WHEN FACING MOUNTING END (X)

| STEP | A | B | A\ | B\ | CCW |
|------|---|---|----|----|-----|
| 1 | + | + | - | - | ↓ |
| 2 | - | + | + | - | ↓ |
| 3 | - | - | + | + | ↓ |
| 4 | + | - | - | + | ↑ |

WIRING DIAGRAM

| | | | | | | | | |
|-----|--------------------------|------|------|------------|-----------|--------|----------|-----------------------|
| | | | | SCALE FREE | APVD | S.Hα. | 26.02.07 | STEPPING MOTOR |
| 1 | INDUCTANCE+UL NO.+LENGTH | | | 05.05.09 | J.W. | X ±0.5 | CHKD | |
| REV | DESCRIPTION | DATE | APVD | 1PL ±0.2 | DRN | J.W. | 28.06.06 | DWG.NO |
| | | | | 2PL ±0.1 | SIGNATURE | | | ST4209L1206 |
| | | | | ANGLE ±30' | | | | |