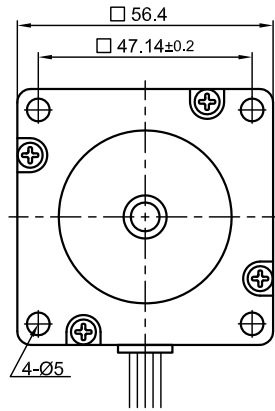
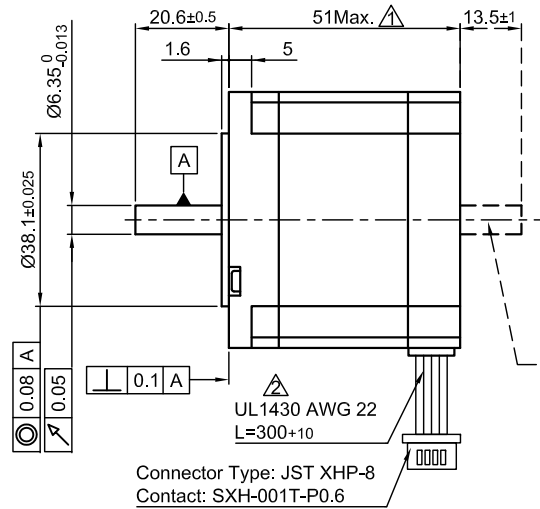


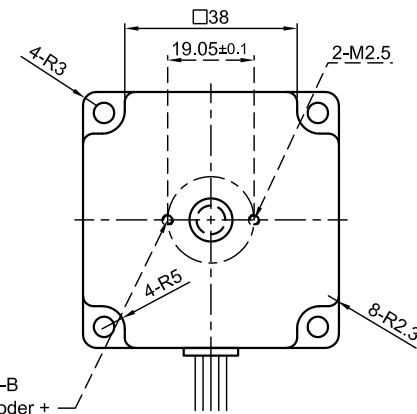
Front view and mounting



Side view

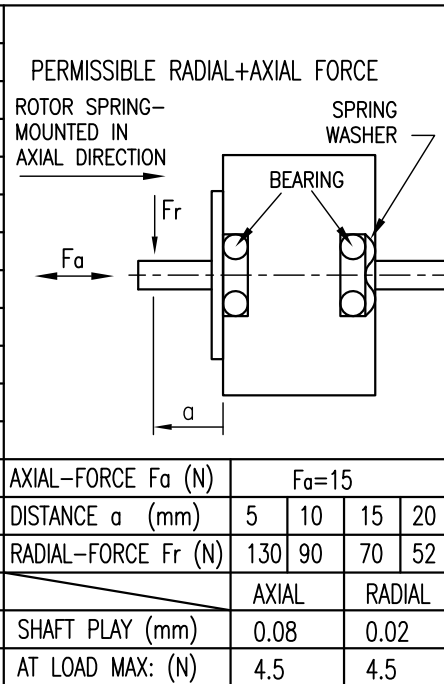


Rear view



(only for type ST5918S1008-B Ready for encoder + driver mount)

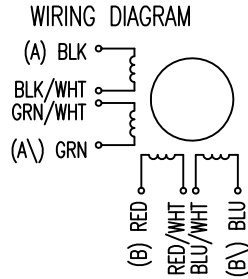
SPECIFICATION	CONNECTION		BIPOLAR	
	UNIPOLAR OR BIPOLAR-1 WINDING	SERIAL	PARALLEL	
VOLTAGE (VDC)	6.2			
AMPS/PHASE	1.0	0.71	1.41	
RESISTANCE/PHASE (Ohms)@25°C	6.2±10%	12.4±10%	3.1±10%	
INDUCTANCE/PHASE (mH) @1KHz	9.7±20%	38.8±20%	9.7±20%	
HOLDING TORQUE (Nm) [lb-in]	0.65 [5.75]	0.92 [8.13]	0.92 [8.13]	
DETENT TORQUE (Nm) [lb-in]	0.03 [0.266]			
STEP ANGLE (°) ± ACCURACY	1.8±5% (NON-ACCUM)			
BACK-EMF (V) (300 U/min)		31.5		
ROTOR INERTIA (Kg-m ²) [lb-in ²]	2.75x10 ⁻⁵ [0.094]			
WEIGHT (Kg) [lb]	0.65 [1.43]			
TEMPERATURE RISE: MAX.80°C (MOTOR STANDSTILL; FOR 2 PHASE ENERGIZED)				
AMBIENT TEMPERATURE -10~ 50°C [14°F ~ 122°F]				
INSULATION RESISTANCE 100 MOhm (UNDER NORMAL TEMPERATURE AND HUMIDITY)				
INSULATION CLASS B 130° [266°F]				
DIELECTRIC STRENGTH 500VAC FOR 1 MIN. (BETWEEN THE MOTOR COILS AND THE MOTOR CASE)				
AMBIENT HUMIDITY MAX. 85% (NO CONDENSATION)				



TYPE OF CONNECTION (EXTERN)				MOTOR		
UNIPOLAR	BIPOLAR 1WINDING	BIPOLAR SERIAL	BIPOLAR PARALLEL	CONNECTOR PIN NO. (A)	LEADS	WINDING
A	A	A	A	1	BLK	A
COM	A			3	BLK/WHT	
A\		A\	A\	2	GRN/WHT	A\
B	B	B	B	4	GRN	B
COM	B			5	RED	
B\		B\	B\	7	RED/WHT	B\
				6	BLU/WHT	
				8	BLU	

FULL STEP 2 PHASE-Ex., WHEN FACING MOUNTING END (X)

STEP	A	B	A\	B\	CCW
1	+	+	-	-	↓
2	-	+	+	-	
3	-	-	+	+	↑
4	+	-	-	+	



REV	DESCRIPTION	DATE	APVD
2	NEW UL NO.	28.07.09	J.W.
1	PIN-ASSIGNMENT	08.01.08	J.W.



ST5918S1008

SCALE	FREE	APVD	S.Ha.	19.03.07
X	±0.5	CHKD		
1PL	±0.2	DRN	J.W.	21.11.06
2PL	±0.1	SIGNATURE		DATE
ANGLE	±30'			

STEPPING MOTOR

DWG.NO ST5918S1008