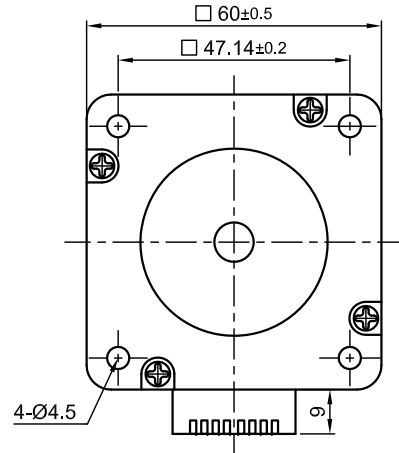
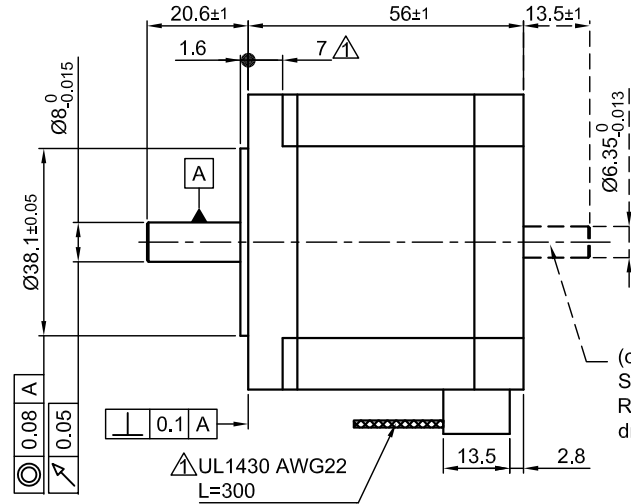


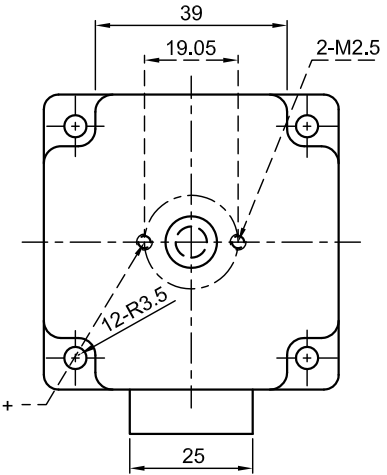
Front view and mounting



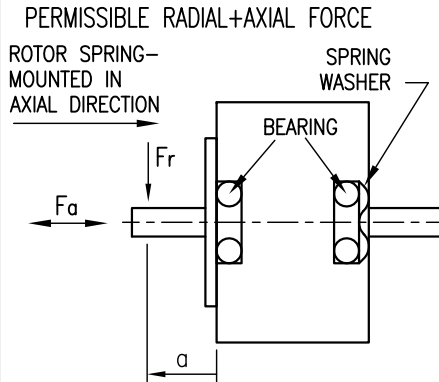
Side view



Rear view



SPECIFICATION	CONNECTION	UNIPOLAR OR BIPOLAR-1 WINDING	BIPOLAR	
			SERIAL	PARALLEL
VOLTAGE (VDC)		2.4		
AMPS/PHASE		3.0	2.12	4.24
RESISTANCE/PHASE (Ohms)@25°C		0.8±15%	1.6±15%	0.4±15%
INDUCTANCE/PHASE (mH) @1KHz		1.38±20%	5.52±20%	1.38±20%
HOLDING TORQUE (Nm) [lb-in]		1.17 [10.35]	1.66 [14.65]	1.66 [14.65]
DETENT TORQUE (Nm) [lb-in]		0.035 [0.311]		
STEP ANGLE (°) ± ACCURACY		1.8±5% (NON-ACCUM)		
BACK-EMF (V) (300 U/min)		16.7		
ROTOR INERTIA (Kg-m <sup>2</sup> ) [lb-in <sup>2</sup> ]		4.0x10 <sup>-5</sup> [0.154]		
WEIGHT (Kg) [lb]		0.77 [1.7]		

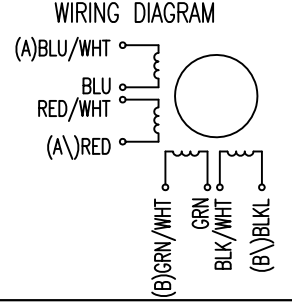


	AXIAL-FORCE Fa (N)			
	Fa=14			
DISTANCE a (mm)	5	10	15	20
RADIAL-FORCE Fr (N)	163	112	85	63
		AXIAL	RADIAL	
SHAFT PLAY (mm)		0.075	0.025	
AT LOAD MAX: (N)		10	5.0	

UNIPOLAR	TYPE OF CONNECTION (EXTERN)			MOTOR	
	1WINDING	BIPOLAR SERIAL	BIPOLAR PARALLEL	LEADS	WINDING
A	A	A	A	BLU/WHT	A
COM				BLU	
A\		A\	A\	RED/WHT	A\
B	B	B	B	RED	
COM				GRN/WHT	B
B\		B\	B\	GRN	
				BLK/WHT	B\
				BLK	

FULL STEP 2 PHASE-Ex., WHEN FACING MOUNTING END (X)

STEP	A	B	A\	B\	CCW
1	+	+	-	-	↓ ↑
2	-	+	+	-	
3	-	-	+	+	
4	+	-	-	+	



REV	DESCRIPTION	DATE	APVD
1	LENGTH+UL NO.	06.08.09	J.W.

**Nanotec**  
PLUG & DRIVE

ST6018M3008

SCALE	FREE	APVD	S.Ha.	16.01.07
X	±0.5	CHKD		
1PL	±0.2	DRN	J.W.	13.07.06
2PL	±0.1	SIGNATURE		
ANGLE	±30'	DATE		

**STEPPING MOTOR**

DWG.NO ST6018M3008