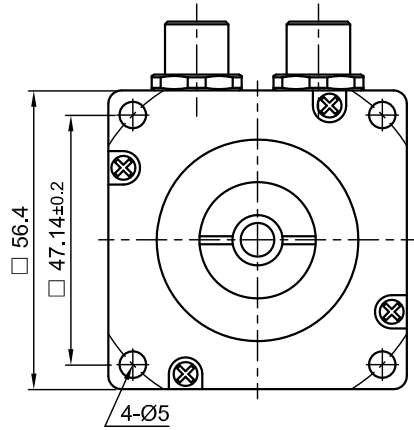
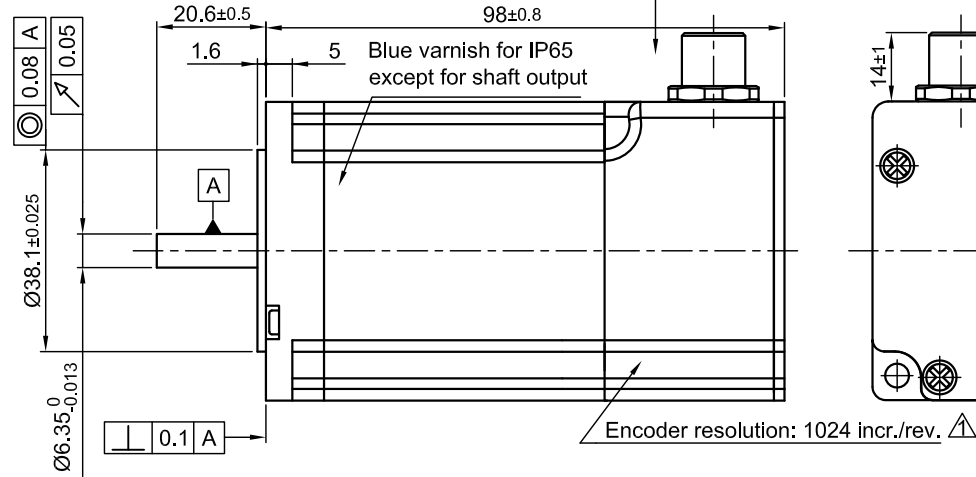


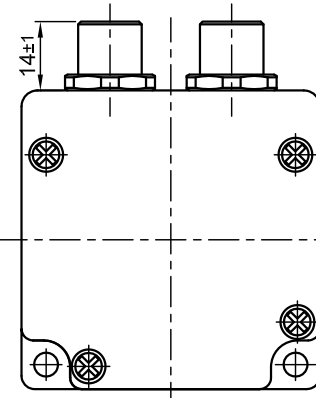
Front view and mounting



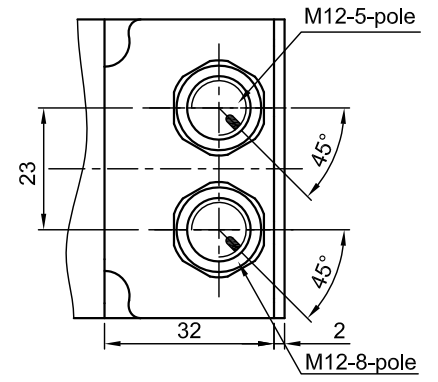
Side view



Y view

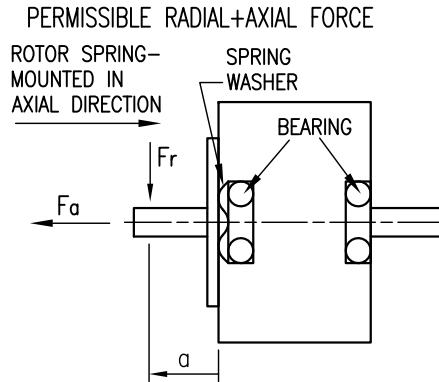


Z view



Attention: An axial pulling of the motor shaft is not permitted and may damage the motor.

SPECIFICATION	CONNECTION	BIPOLAR PARALLEL
VOLTAGE (VDC)		2.1
AMPS/PHASE		4.2
RESISTANCE/PHASE (Ohms)@25°C		0.5 ± 10%
INDUCTANCE/PHASE (mH) @1KHz		1.9 ± 20%
HOLDING TORQUE (Nm) [lb-in]		1.98 [16.28]
DETENT TORQUE (Nm) [lb-in]		0.068 [0.602]
STEP ANGLE (°) ± ACCURACY		1.8 ± 5% (NON-ACCUM)
BACK-EMF (V) (300 U/min)		9.75
ROTOR INERTIA (Kg-m²) [lb-in²]		4.8 × 10 ⁻⁵ [0.164]
WEIGHT (Kg) [lb]		1.0 [2.2]
TEMPERATURE RISE: MAX.80°C (MOTOR STANDSTILL; FOR 2 PHASE ENERGIZED)		
AMBIENT TEMPERATURE -10°~ 50°C [14°F ~ 122°F]		
INSULATION RESISTANCE 100 MOhm (UNDER NORMAL TEMPERATURE AND HUMIDITY)		
INSULATION CLASS B 130° [266°F]		
DIELECTRIC STRENGTH 500VAC FOR 1 MIN. (BETWEEN THE MOTOR COILS AND THE MOTOR CASE)		
AMBIENT HUMIDITY MAX. 85% (NO CONDENSATION)		



PERMISSIBLE RADIAL+AXIAL FORCE	AXIAL-FORCE Fa (N)				
	Fa=15				
	DISTANCE a (mm)	5	10	15	20
	RADIAL-FORCE Fr (N)	130	90	70	52
		AXIAL		RADIAL	
	SHAFT PLAY MAX (mm)	-0.03		0.02	
	AT LOAD: (N)	200		4.5	

M12-5 pole Motor	
PIN. NO.	ASSIGNMENT
1	A\
2	A
3	B
4	B\
5	HOUSING

M12-8 pole Encoder	
PIN NO.	ASSIGNMENT
1	A
2	A\
3	B
4	B\
5	GND
6	I\
7	I
8	Vcc (24V)
HOUSING	GND/SHIELDING

FULL STEP 2 PHASE-Ex.,
WHEN FACING MOUNTING END (X)

STEP	A	B	A\	B\		CCW
1	+	+	-	-	↓ ↑	↑ ↓
2	-	+	+	-		
3	-	-	+	+		
4	+	-	-	+		

2	AXIAL PLAY + ATTENTION	19.03.12	J.W.	 Nanotec [®] PLUG & DRIVE AS5918L4204-ENM24	SCALE FREE	APVD			STEPPER MOTOR IN PROTECTION DWG.NO
1	ENCODER RESOLUTION	15.02.12	J.W.		X ±0.5	CHKD	L B	11.11.11	
REV	DESCRIPTION	DATE	APVD		1PL ±0.2	DRN	GYQ	11.11.11	
				2PL ±0.1	SIGNATURE		DATE		AS5918L4204-ENM24
				ANGLE ±30'					