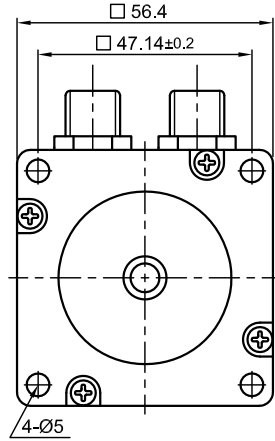
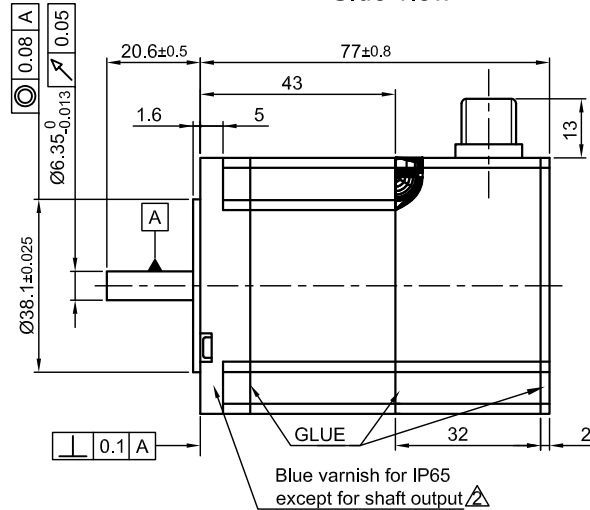


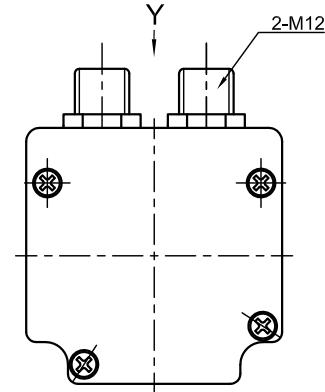
Front view and mounting



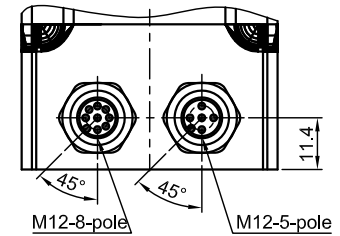
Side view



Rear view



Y view

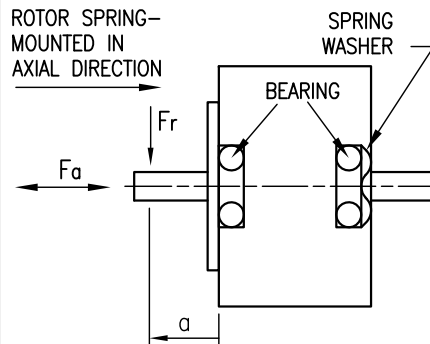


SPECIFICATION	CONNECTION	BIPOLAR PARALLEL
VOLTAGE (VDC)		2.4
AMPS/PHASE		2.82
RESISTANCE/PHASE (Ohms)@25°C		0.85±10%
INDUCTANCE/PHASE (mH) @1KHz		3.6±20%
HOLDING TORQUE (Nm) [lb-in]		1.05 [9.29]
DETENT TORQUE (Nm) [lb-in]		0.04 [0.354]
STEP ANGLE (°) ± ACCURACY		1.8±5% (NON-ACCUM)
BACK-EMF (V) (300 U/min)		9.0
ROTOR INERTIA (Kg-m²) [lb-in²]		3.0x10 ⁻⁵ [0.102]
WEIGHT (Kg) [lb]		0.85 [1.88]

FULL STEP 2 PHASE-Ex.,
WHEN FACING MOUNTING END (X)

STEP	A	B	A\	B\	CCW	CW
1	+	+	-	-	↓	↑
2	-	+	+	-	↑	↓
3	-	-	+	+	↓	↑
4	+	-	-	+	↑	↓

PERMISSIBLE RADIAL+AXIAL FORCE



M12-5 pole Motor	
PIN. NO.	ASSIGNMENT
1	A\
2	A
3	B
4	B\
5	HOUSING

M12-8 pole Encoder	
PIN. NO.	ASSIGNMENT
1	A
2	A\
3	B
4	B\
5	GND
6	I\
7	I
8	Vcc (5V)
HOUSING	GND/SHIELDING

TEMPERATURE RISE: MAX.80°C (MOTOR STANDSTILL; FOR 2 PHASE ENERGIZED)	AXIAL-FORCE Fa (N)	Fa=15
AMBIENT TEMPERATURE -10~ 50°C [14°F ~ 122°F]	DISTANCE a (mm)	5 10 15 20
INSULATION RESISTANCE 100 MOhm (UNDER NORMAL TEMPERATURE AND HUMIDITY)	RADIAL-FORCE Fr (N)	130 90 70 52
INSULATION CLASS B 130° [266°F]		AXIAL RADIAL
DIELECTRIC STRENGTH 500VAC FOR 1 MIN. (BETWEEN THE MOTOR COILS AND THE MOTOR CASE)	SHAFT PLAY (mm)	0.08 0.02
AMBIENT HUMIDITY MAX. 85% (NO CONDENSATION)	AT LOAD MAX: (N)	4.5 4.5

CABLE MOTOR:
ZK-M12-5-2m(5m)
STRAIGHT OR 90° ANGELED

CABLE ENCODER:
ZK-M12-8-2m(5m)
STRAIGHT OR 90° ANGELED

3	PIN I AND I\ INTERCHANGED	16.03.11	J.W.
2	RESTRICTION SUPPLEMENTED	17.02.10	J.W.
4	NEW VALUE OF BACK-EMF	13.05.11	J.W.
REV	DESCRIPTION	DATE	APVD



AS5918M2804-E

SCALE FREE	APVD	S.H.a.	09.11.09
X ±0.5	CHKD		
1PL ±0.2	DRN	J.W.	09.11.09
2PL ±0.1	SIGNATURE		DATE
ANGLE ±30'			

STEPPER MOTOR IN PROTECTION

DWG.NO

AS5918M2804-E