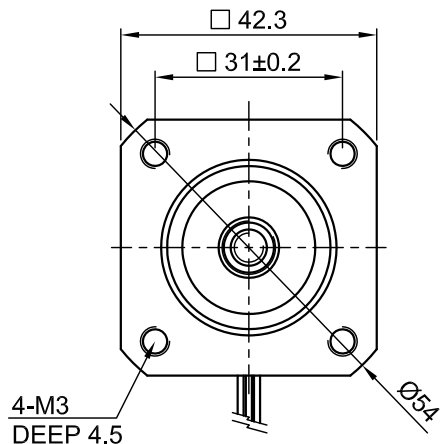
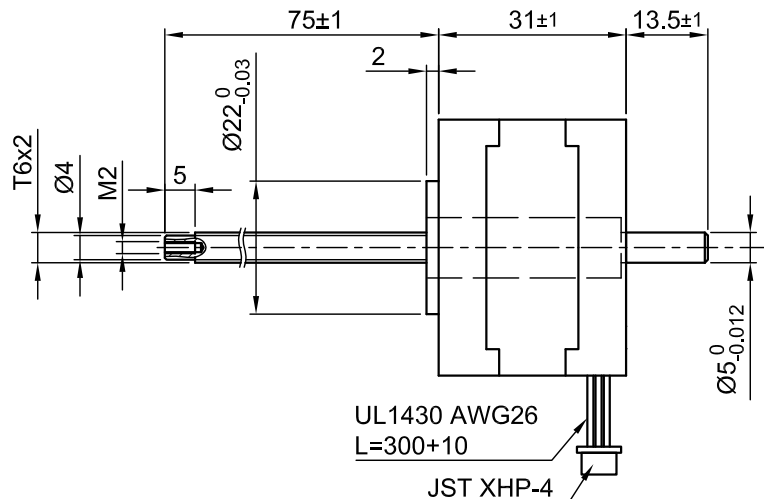


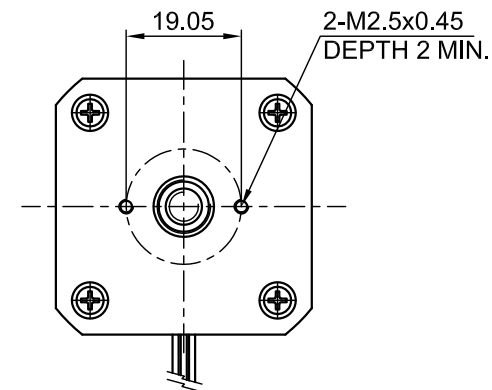
Front view and mounting



Side view



Rear view



SPECIFICATION	
AMPS/PHASE	1.4
RESISTANCE/PHASE (Ohms)@25°C	2.0±15%
INDUCTANCE/PHASE (mH) @1KHz	2.8±20% $\triangle$
SPINDLE PITCH (mm) [in]	2 [0.079]
THRUST (N)	250 $\triangle$
RESOLUTION (mm/STEP)	0.010
STATIC THRUST (N) (NO CURRENT)	300 [67.46]
MAX. SPEED (mm/sec.) AT 48V	55 $\triangle$
WEIGHT (Kg) [lb]	0.2 [0.44]
TEMPERATURE RISE: MAX.80°C (MOTOR STANDSTILL; FOR 2 PHASE ENERGIZED)	
AMBIENT TEMPERATURE -10°~ 50°C [14°F ~ 122°F]	
INSULATION RESISTANCE 100 MOhm (UNDER NORMAL TEMPERATURE AND HUMIDITY)	
INSULATION CLASS B 130° [266°F]	
DIELECTRIC STRENGTH 500VAC FOR 1 MIN. (BETWEEN THE MOTOR COILS AND THE MOTOR CASE)	
AMBIENT HUMIDITY MAX. 85% (NO CONDENSATION)	

Please regard the application note at [www.nanotec.com](http://www.nanotec.com) for further informations.  $\triangle$

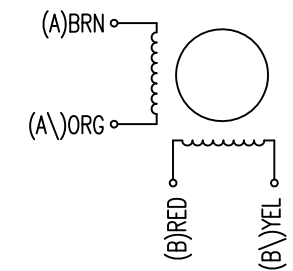
Shaft play is adjustable at the motor.

PIN NO	TYPE OF CONNECTION (EXTERN)		MOTOR	
	BIPOLAR	LEADS	WINDING	
1	A —	BRN	A	
2	A\ —	ORG	A\ B	
3	B —	RED	B	
4	B\ —	YEL	B\ A	

WIRING DIAGRAM

FULL STEP 2 PHASE-Ex., WHEN FACING MOUNTING END (X)

STEP	A	B	A\ B	B\ A	CCW	CW
1	+	+	-	-	↓	↑
2	-	+	+	-	↓	↑
3	-	-	+	+	↓	↑
4	+	-	-	+	↓	↑



3 (2x)	UPDT. DATA	29.09.14	J.D.
2	CHANGE INDUCTANCE	13.11.13	A.S.
1	NOTE ADD.	25.05.12	J.W.
REV	DESCRIPTION	DATE	APVD

**Nanotec**  
PLUG & DRIVE

LS4118S1404-T6x2-75

SCALE FREE	APVD	S.R.	25.10.10
X ±0.5	CHKD		
1PL ±0.2	DRN	J.W.	25.10.10
2PL ±0.1	SIGNATURE	DATE	
ANGLE ±30'			

**LINEAR ACTUATOR**

DWG.NO LS4118S1404-T6x2-75