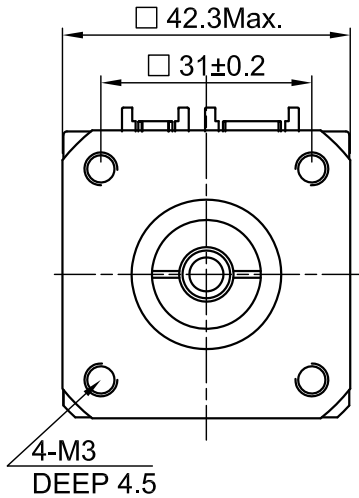
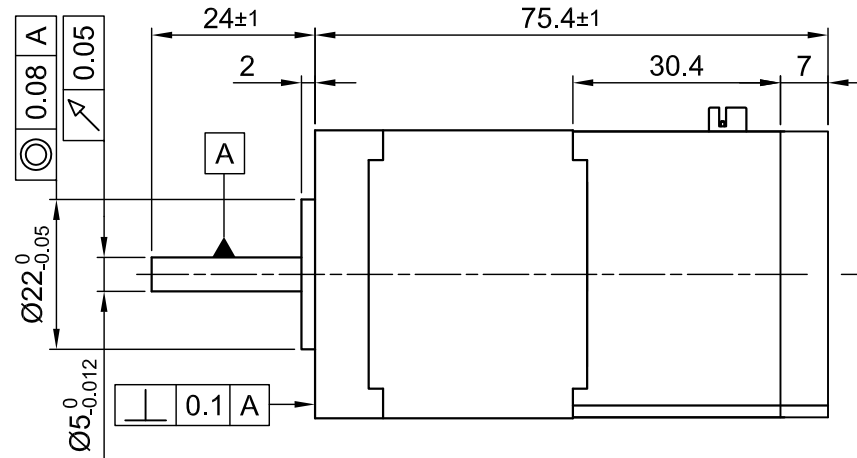


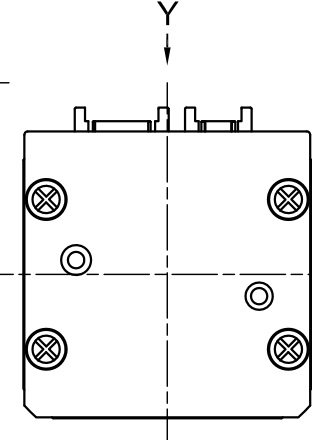
Front view and mounting



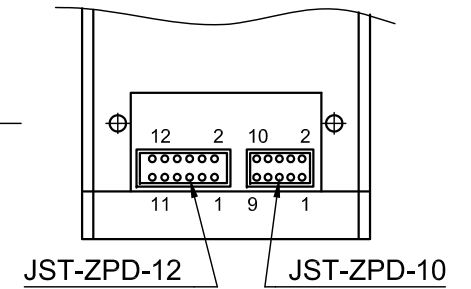
Side view



Rear view



Y view \triangle



SPECIFICATION		CONNECTION	BIPOLAR	INPUT CONNECTION		PERMISSIBLE RADIAL+AXIAL FORCE		JST ZPD-10		JST ZPD-12		
VOLTAGE (VDC)	12 to 48							PIN No.	ASSIGNMENT	PIN No.	ASSIGNMENT	
AMPS/PHASE	adj. to 1.8A (max. 3A)			<p>AXIAL-FORCE F_a (N)</p> <p>DISTANCE a (mm)</p> <p>RADIAL-FORCE F_r (N)</p>		1	GND	1	GND	2	INPUT 1	
RESISTANCE/PHASE (Ohms)@25°C	1.75±15%			<p>AXIAL</p> <p>RADIAL</p>		2	GND	3	+UB LOGIC \triangle	3	INPUT 2	
INDUCTANCE/PHASE (mH) @1KHz	3.3±20%			<p>SHAFT PLAY (mm)</p> <p>AT LOAD MAX: (N)</p>		3	+UB LOGIC \triangle	4	N.C.	4	INPUT 3	
HOLDING TORQUE (Nm) [lb-in]	0.5 [4.425]			<p>AXIAL</p> <p>RADIAL</p>		4	N.C.	5	CAN-	5	INPUT 4	
DETENT TORQUE (Nm) [lb-in]	0.022 [0.195]			<p>AXIAL</p> <p>RADIAL</p>		5	CAN-	6	CAN+	6	INPUT 5	
STEP ANGLE (°) ± ACCURACY	1.8 adj. to 1/64			<p>AXIAL</p> <p>RADIAL</p>		6	CAN+	7	GND	7	INPUT 6	
BACK-EMF (V) (300 U/min)	6.9			<p>AXIAL</p> <p>RADIAL</p>		7	GND	8	Vcc	8	ANALOG INPUT	
ROTOR INERTIA (Kg-m ²) [lb-in ²]	8.2x10 ⁻⁶ [2.8x10 ⁻²]			<p>AXIAL</p> <p>RADIAL</p>		8	Vcc	9	Vcc	9	OUTPUT 1	
WEIGHT (Kg) [lb]	0.42 [0.92]			<p>AXIAL</p> <p>RADIAL</p>		9	Vcc	10	GND	10	OUTPUT 2	
TEMPERATURE RISE: MAX.80°C (MOTOR STANDSTILL; FOR 2 PHASE ENERGIZED)				<p>AXIAL</p> <p>RADIAL</p>		10	GND	11	GND	11	OUTPUT 3	
AMBIENT TEMPERATURE -10°C ~ 50°C [14°F ~ 122°F]				<p>AXIAL</p> <p>RADIAL</p>		11	GND	12	GND	12	GND	
INSULATION RESISTANCE 100 MOhm (UNDER NORMAL TEMPERATURE AND HUMIDITY)												
INSULATION CLASS B 130° [266°F]												
DIELECTRIC STRENGTH 500VAC FOR 1 MIN. (BETWEEN THE MOTOR COILS AND THE MOTOR CASE)												
AMBIENT HUMIDITY MAX. 85% (NO CONDENSATION)												
						SCALE FREE	APVD	<i>X.W.</i>	13.06.12	<p>STEPPING MOTOR</p> <p>DWG.NO PD2-N4118L1804-3</p>		
1	PIN ASSIGNMENT	13.06.12	J.W.			X ±0.5	CHKD					
REV	DESCRIPTION	DATE	APVD	PD2-N4118L1804-3	1PL ±0.2	DRN	<i>J.W.</i>	13.06.12				
					2PL ±0.1	SIGNATURE						
					ANGLE ±30'							