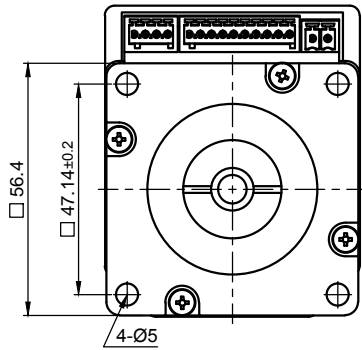
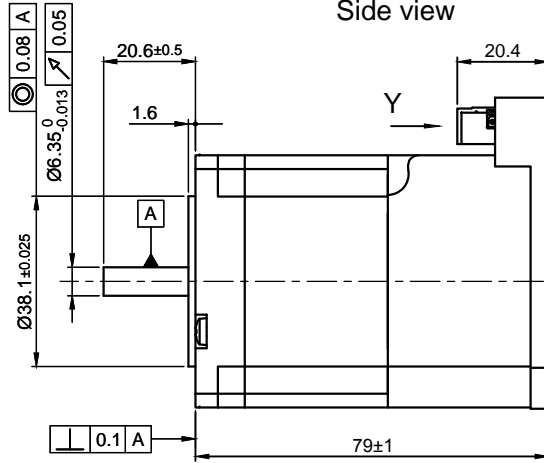


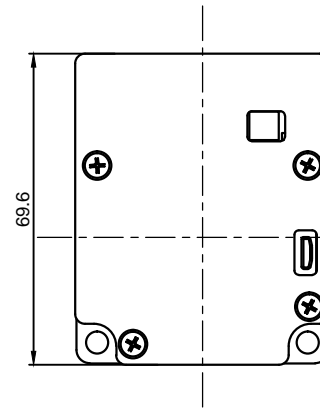
Front view and mounting



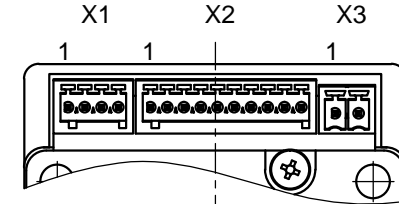
Side view



Rear view

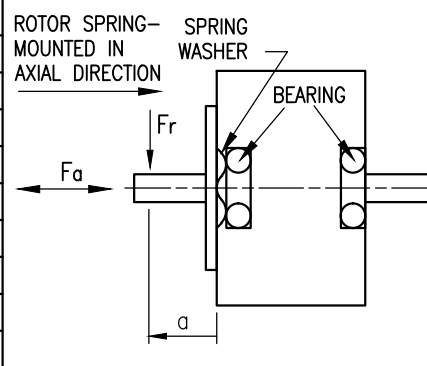


Y view



CONNECTION	BIPOLAR PARALLEL
SPECIFICATION	
VOLTAGE (VDC)	1.575
AMPS/PHASE	4.2
RESISTANCE/PHASE (Ohms)@25°C	0.375±15%
INDUCTANCE/PHASE (mH) @1KHz	1.1±20%
HOLDING TORQUE (Nm) [lb-in]	1.13 [10.00]
DETENT TORQUE (Nm) [lb-in]	0.04 [0.354]
STEP ANGLE (°)	1.8
ACCURACY(NON-ACCUM)	±5%
ROTOR INERTIA (Kg-m <sup>2</sup> ) [lb-in <sup>2</sup> ]	3.0x10 <sup>-5</sup> [0.102]
WEIGHT (Kg) [lb]	0.8

PERMISSIBLE RADIAL+AXIAL FORCE



AXIAL-FORCE Fa (N)	Fa=10			
DISTANCE a (mm)	5	10	15	20
RADIAL-FORCE Fr (N)	AXIAL		RADIAL	
	130	90	70	52
SHAFT PLAY (mm)	0.2Max		0.02	
AT LOAD MAX: (N)	200		4.5	

X1, Phoenix MCV-04

PIN No.	Function
1	GND
2	Analog Input(0-10V)
3	Output (open drain)
4	+12V (Voltage Output, max.100mA)

X2, Phoenix MCV-10

PIN No.	Function
1	Input1 (+24V)
2	Input2 (+24V)
3	Input3 (+24V)
4	-Enable +5/+24V
5	Enable +5/+24V
6	-Direction +5/+24V
7	Direction +5/+24V
8	-Clock +5/+24V
9	Clock +5/+24V
10	GND

X3, Phoenix FMC-02

PIN No.	Function
1	+VCC
2	GND

FULL STEP 2 PHASE-Ex., WHEN FACING MOUNTING END (X)

STEP	A	B	A'	B'	CCW	CW
1	+	+	-	-	↓	↑
2	-	+	+	-	↑	↓
3	-	-	+	+	↓	↑
4	+	-	-	+	↑	↓

OVERTEMPERATURE PROTECTION (ELECTRONICS): 80°C			
AMBIENT TEMPERATURE -10°~ 40°C [14°F ~ 104°F] (HIGHER TEMPERATURE REDUCES DUTY CYCLE)			
INSULATION RESISTANCE 100 MΩ (UNDER NORMAL TEMPERATURE AND HUMIDITY)			
INSULATION CLASS B 130° [266°F]			
DIELECTRIC STRENGTH 500VAC FOR 1 MIN. (BETWEEN THE MOTOR COILS AND THE MOTOR CASE)			
AMBIENT HUMIDITY MAX. 85% (NO CONDENSATION)			



REV	DESCRIPTION	DATE	APVD	PD4-C5918M4204-E-01

SCALE FREE	APVD	G.M.	01.08.13
X ±0.5	CHKD		
1PL ±0.2	DRN	GYQ	01.08.13
2PL ±0.1	SIGNATURE	DATE	
ANGLE ±30'			

<b>PLUG&amp;DRIVE MOTOR</b>	
DWG.NO	PD4-C5918M4204-E-01