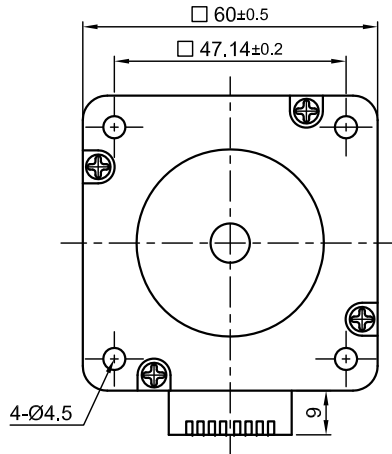
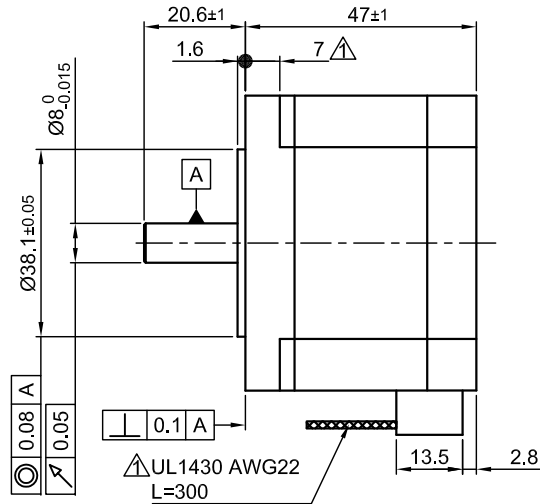


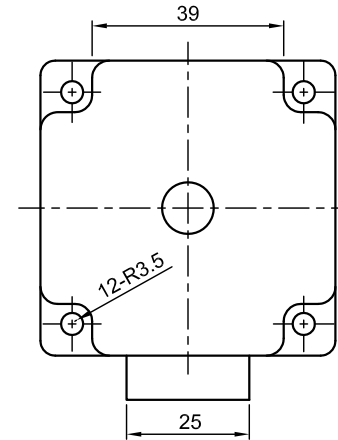
Front view and mounting



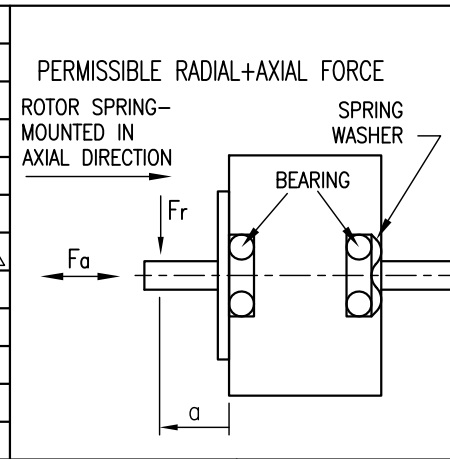
Side view



Rear view



SPECIFICATION	CONNECTION	UNIPOLAR OR BIPOLAR-1 WINDING	BIPOLAR	
			SERIAL	PARALLEL
VOLTAGE (VDC)		2.04		
AMPS/PHASE		3.0	2.12	4.24
RESISTANCE/PHASE (Ohms)@25°C		0.68±15%	1.6±15%	0.4±15%
INDUCTANCE/PHASE (mH) @1KHz		0.8±20%	5.52±20%	1.38±20%
HOLDING TORQUE (Nm) [lb-in]		0.78 [6.9]	1.1 [9.74]	1.1 [9.74]
DETENT TORQUE (Nm) [lb-in]		0.023 [0.199]		
STEP ANGLE (°) ± ACCURACY		1.8±5% (NON-ACCUM)		
BACK-EMF (V) (300 U/min)		11.65		
ROTOR INERTIA (Kg-m²) [lb-in²]		2.75x10 ⁻⁵ [0.094]		
WEIGHT (Kg) [lb]		0.6 [1.323]		

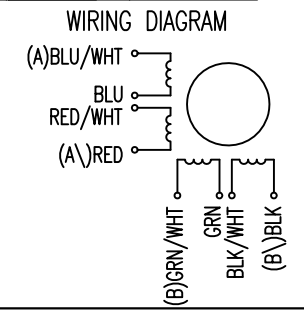


TYPE OF CONNECTION (EXTERN)				MOTOR	
UNIPOLAR	BIPOLAR			LEADS	WINDING
	1WINDING	SERIAL	PARALLEL		
A —	A —	A —	A —	BLU/WHT	A
COM —				BLU	
A\ —		A\ —	A\ —	RED/WHT	A\
B —	B —	B —	B —	RED	
COM —				GRN/WHT	B
B\ —		B\ —	B\ —	GRN	
				BLK/WHT	B\
				BLK	

AXIAL-FORCE Fa (N)	Fa=14			
DISTANCE a (mm)	5	10	15	20
RADIAL-FORCE Fr (N)	163	112	85	63
		AXIAL	RADIAL	
SHAFT PLAY (mm)	0.075	0.025		
AT LOAD MAX: (N)	10	5.0		

FULL STEP 2 PHASE-Ex., WHEN FACING MOUNTING END (X)

STEP	A	B	A\	B\	CCW	CW
1	+	+	-	-	↓	↑
2	-	+	+	-	↑	↓
3	-	-	+	+	↓	↑
4	+	-	-	+	↑	↓



2	BIPOL. HOLD. TORQUE	18.07.14	J.D.
1	LENGTH+UL NO.	06.08.09	J.W.
REV	DESCRIPTION	DATE	APVD

Nanotec
PLUG & DRIVE

ST6018X3008-A

SCALE FREE	APVD	S.Ha.	16.01.07
X ±0.5	CHKD		
1PL ±0.2	DRN	J.W.	13.07.06
2PL ±0.1	SIGNATURE		
ANGLE ±30'	DATE		

STEPPING MOTOR

DWG.NO ST6018X3008-A